

PT 12-6

6Volt 12Ah

Specifications

Nominal Voltage(V) 6V

Nominal Capacity

| | | |
|--------------|--------------------|---------|
| 20 hour rate | (0.36A to 10.50V) | 12Ah |
| 10 hour rate | (0.684A to 10.50V) | 11.00Ah |
| 5 hour rate | (1.224A to 10.20V) | 10.17Ah |
| 1 C | (7.2A to 9.60V) | 4.43Ah |
| 3 C | (21.6A to 9.60V) | 2.8Ah |

Weight Approx. 1.72kg(3.79Lbs.)

Internal Resistance (at 1KHz) Approx. 22 mΩ

Maximum Discharge Current for

5 seconds: 108A

Charging Methods at 25°C (77°F)

Cycle use:

Charging Voltage 7.30 to 7.4V

Coefficient -5.0mV/°C/cell

Maximum Charging Current : 3.6A

Standby use:

Float Charging Voltage 6.85 to 6.95V

Coefficient -3.0mV/°C/cell

Operating Temperature Range

Charge -15°C (5°F) to 40°C (104°F)

Discharge -15°C (5°F) to 50°C (122°F)

Storage -15°C (5°F) to 40°C (104°F)

Charge Retention (shelf life) at 20°C (68°F)

1 month 92%

3 month 90%

6 month 80%

Case Material ABS UL94 HB

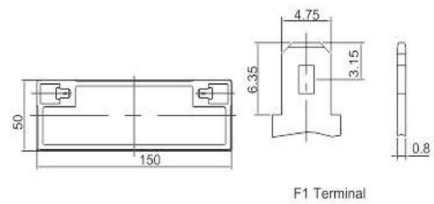
Option: Flammability resistance of (UL94 V-0)

Terminal F1 or F2 (Faston Tab 187 or 250)

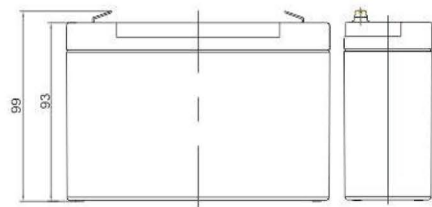


Dimensions

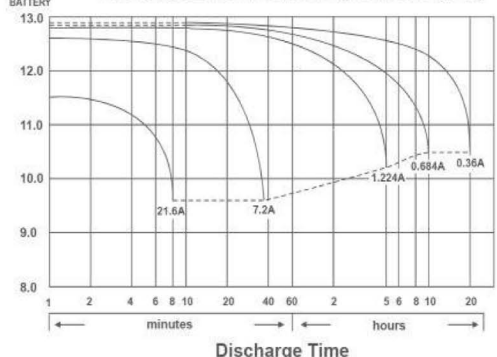
mm(inch)



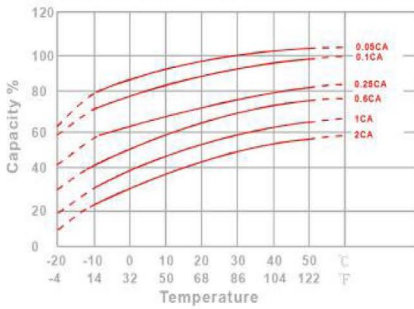
F1 Terminal



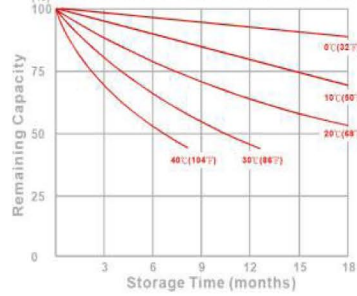
Discharge Time VS. Discharge Current (25°C)



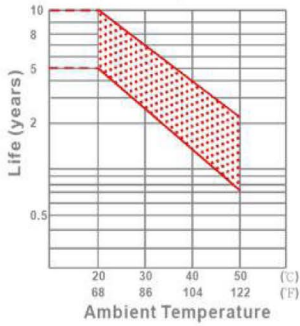
Effect of Temperature on Capacity 25°C(77°F)



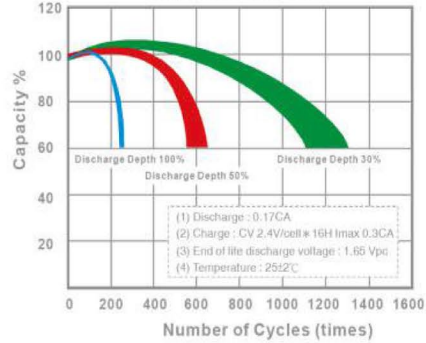
Capacity Retention Characteristic



Trickle (or float) Service Life



Cycle Service Life



Constant Current Discharge Characteristics : A (25°C)

| F.V/Time | 5MIN | 10MIN | 15MIN | 30MIN | 1HR | 2HR | 3HR | 4HR | 5HR | 8HR | 10HR | 20HR |
|----------|-------|-------|-------|-------|-------|-------|-------|-------|-------|-------|-------|-------|
| 1.60V | 47.58 | 31.03 | 22.89 | 13.25 | 7.654 | 4.516 | 3.283 | 2.614 | 2.207 | 1.475 | 1.201 | 0.625 |
| 1.65V | 45.86 | 30.10 | 22.29 | 12.96 | 7.513 | 4.450 | 3.239 | 2.582 | 2.181 | 1.460 | 1.190 | 0.620 |
| 1.70V | 43.62 | 28.89 | 21.50 | 12.57 | 7.325 | 4.362 | 3.181 | 2.539 | 2.147 | 1.440 | 1.174 | 0.613 |
| 1.75V | 40.75 | 27.32 | 20.48 | 12.07 | 7.078 | 4.246 | 3.104 | 2.481 | 2.102 | 1.414 | 1.154 | 0.604 |
| 1.80V | 37.13 | 25.32 | 19.16 | 11.42 | 6.755 | 4.093 | 3.003 | 2.405 | 2.043 | 1.379 | 1.127 | 0.592 |
| 1.85V | 32.67 | 22.81 | 17.49 | 10.58 | 6.340 | 3.894 | 2.870 | 2.306 | 1.964 | 1.332 | 1.092 | 0.577 |

Constant Power Discharge Characteristics : WPC (25°C)

| F.V/Time | 5MIN | 10MIN | 15MIN | 30MIN | 1HR | 2HR | 3HR | 4HR | 5HR | 8HR | 10HR | 20HR |
|----------|-------|-------|-------|-------|-------|------|------|------|------|------|------|------|
| 1.60V | 81.89 | 53.53 | 40.62 | 24.42 | 14.53 | 8.69 | 6.36 | 5.09 | 4.32 | 2.92 | 2.40 | 1.25 |
| 1.65V | 81.03 | 53.32 | 40.39 | 24.24 | 14.41 | 8.62 | 6.32 | 5.06 | 4.29 | 2.90 | 2.38 | 1.24 |
| 1.70V | 77.94 | 51.74 | 39.30 | 23.66 | 14.10 | 8.48 | 6.22 | 4.98 | 4.23 | 2.87 | 2.35 | 1.23 |
| 1.75V | 74.12 | 49.81 | 37.97 | 22.94 | 13.69 | 8.29 | 6.10 | 4.89 | 4.16 | 2.82 | 2.31 | 1.21 |
| 1.80V | 68.71 | 46.96 | 36.02 | 21.92 | 13.13 | 8.03 | 5.92 | 4.76 | 4.05 | 2.76 | 2.26 | 1.19 |
| 1.85V | 61.54 | 43.06 | 33.35 | 20.52 | 12.41 | 7.68 | 5.68 | 4.58 | 3.91 | 2.67 | 2.19 | 1.16 |

(Note) The above characteristics data are average values obtained within three charge/discharge cycle not the minimum values.